

## DATA SHEET

# Mini PAGlink MPL50 Gold Mount Battery

PAG-7141 / EAN 5060854320001

- Rechargeable Lithium-Ion.
- 50 Watt-hours, 14.8V 3.5Ah.
- Intelligent linking technology that allows capacities to be combined (2 linked = 100Wh, 3 = 150Wh).
- Current draw capability of 12A when linked, 8A individually.
- Hot-swap batteries for continuous power.
- Built-in D-Tap output (12V).
- USB output unit (5V 2A), which can be swapped for other unit types: Hirose, Lemo and 2.1-2.5mm.
- Ideal for powering smaller 4K cameras and accessories simultaneously.
- The best Li-Ion cell for high-current capability and capacity retention above 500 cycles, according to NASA Battery Workshop.
- 2 x 1/4" bushes for mounting accessories.
- Numeric Run-Time, Charge Status & Data Display.
- Intelligent battery that communicates and manages its own charge and discharge safely.
- Up to 10 Mini PAGlink Gold Mount batteries can be linked for charge or discharge, regardless of rated capacity or state of charge.
- Compatible with PAGlink and Anton/Bauer Gold Mount Li-Ion chargers.
- Compatible with the camera data system that displays state of charge in the viewfinder/LCD.



- Ergonomic design and 'soft-touch' outer-band for secure handling.
- Durable case construction to withstand the toughest conditions.
- New modular design that allows easier servicing and authorised cell-pack replacement for greater sustainability.
- Battery firmware can be updated externally.
- Independently tested to UN standard to meet air transport regulations.
- 2 year warranty with unlimited cycles during that period

## First PAGlink, Now Mini PAGlink

Mini PAGlink combines all the benefits of PAG's intelligent linking technology with a reduced form factor and increased durability. PAG's patented battery linking technology remains far in advance of any other camera battery system available today.

The MPL50G is a 50Wh battery, designed to complement the dimensions of smaller 4K camcorders and power them in combination with accessories such as monitors, lights and wireless receivers. It provides a single, superior power source for your camera set-up, replacing a multitude of incompatible batteries.

The MPL50G features built-in outputs that the cameras lack: a fixed D-Tap for 12V accessories and a USB unit (5V 2A), which can be swapped easily by the user for a plug-in Lemo, Hirose or 2.1-2.5mm connector unit.



### Less Weight or More Power

With intelligent battery linking, you can control the capacity and weight of your power source to suit the application: 1 battery for handheld applications, 2 to 3 batteries for more current or longer run-time. Linking two 50Wh MPL50 batteries doubles the capacity to 100Wh; 3 batteries provide 150Wh.

### NASA Approved Cells

PAG's Mini PAGlink batteries feature the highest-quality Li-Ion cells, selected by the NASA for their mission to Europa, one of Jupiter's moons. The NASA Battery Workshop found they offered 'the most favourable combination of energy and cycling stability and high rate capability up to 10A'. They also demonstrated the best capacity retention after 500 cycles.

### More Current & Better ROI

When batteries are linked and in similar state of charge, the current-draw capability increases from 8A to 12A. This is ideal for camera set-ups that require power for multiple accessories. Sharing the current load between batteries contributes to an extended overall battery life and a better return on investment. PAG provides a 2 year warranty for the MPL50G, with no limit on the number of cycles during that period.

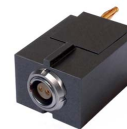
## Swappable USB Output Unit



### Choice of Output Units



Hirose (4-Pin)  
PAG-9712H



Lemo (2-Pin)  
PAG-9712L



USB (2A)  
PAG-9712U



D-Tap  
PAG-9712D



2.1 - 2.5mm  
PAG-9712P

### Hot-Swap or Add

PAGlink allows seamless hot-swapping for continuous power, or the ability to add another battery just to keep shooting; putting an end to time-consuming camera reboots.

### No Dead Weight

Simultaneous rather than sequential discharge means that there are no unused batteries adding dead weight to the camera.

### Intelligent Linking

When linked, the batteries form a network that enables them to communicate with each other, managing the output safely, and preventing the transfer of charge between batteries. A fully-charged battery can be linked safely to one that is fully-discharged.

## MPL50G Front



## MPL50G Back



Patents Apply: [paguk.com/patents](http://paguk.com/patents)

## Compatibility & Integration

The MPL50G is compatible with full-size Gold Mount camera plates. It can be linked to any PAGlink Gold Mount battery for discharging or charging, regardless of rated capacity. It can be charged using PAGlink or Anton Bauer chargers, for maximum versatility and economic integration.

## More Mounting Positions

Each battery features two 1/4" bush inserts. These can be used for mounting camera accessories to individual or linked batteries.

## Run-Time, Charge Status & Data

PAG's unique battery display shows remaining run-time, on-load, in hours and minutes. When batteries are linked, the run-time figure is for the entire stack. A single button press shows individual battery state of charge as a percentage of full, in 1% increments. 3 button presses and hold, provides access to the data menu, where amongst other useful information, the number of cycles can be displayed. This data is designed to assist with battery management.

## In-Viewfinder Information

MPL Gold Mount batteries communicate automatically with the camera data system that allows Anton Bauer batteries to display their remaining capacity in the viewfinder and LCD.

## Flight Friendly

The MPL50G is a 50Wh battery and included in your personal allowance of 20 units of 100Wh or below, when you fly. All PAG Li-Ion batteries are tested to UN standards by an independent authority and certified to comply with air transport safety regulations.

## Linked Battery Charging

PAG is the only manufacturer that offers linked charging for Gold Mount batteries. Linked charging allows more batteries to be charged using fewer chargers, and with less user-intervention.

Up to 10 MPL50G batteries, in any state of charge, can be linked for charging with any PAGlink charger. The batteries control their own charge regime which means that Anton Bauer Li-Ion chargers can be used (dependent on the model and firmware version).

The 2-position PAG PL16 Charger will fully-charge one fully-discharged MPL50 in 1hr 15mins, and 16 in 12hrs. State of charge as a percentage is indicated on the battery's individual display.

PAG also offers a low-cost, ultra-compact, Micro Charger, which is the ideal travel partner. It can be powered from a variety of 5-20V DC power sources, which is ideal for location use.

## Ergonomic & Durable

The MPL50G features an ergonomic design and a 'soft-touch' coated outer band for safer handling and increased durability. The battery case is manufactured from high-impact, injection-moulded ABS which is inherently very strong and flexible. The MPL50G has been designed to withstand the harshest working conditions.

## Modular Construction

Mini PAGlink batteries are the first to feature PAG's new, fully-serviceable, modular construction that allows authorised replacement of the cell-pack whilst maintaining conformity with UN standards and IATA air transport regulations.

## SPECIFICATION

**Connector:** Gold Mount.

**Numeric Display:** State of charge is expressed as a percentage, in 1% increments. Run-time, on-load, is expressed in hours and minutes, in 1 minute increments. Battery data: voltage, temperature, number of charge/discharge cycles and software version.

**Construction:** ABS injection mouldings designed to protect the cells from impact damage.

**Modular Design:** The internal modules, including the cell-pack, can be replaced by an authorised service facility.

**Replaceable Contact Assemblies:** The front and rear contact assemblies are external to the battery case and can be replaced if damaged.

**Cells:** Premium-grade, high-current, sealed Lithium-Ion rechargeable cylindrical cells.

**Voltage:** 14.8V nominal. 4 cells connected in series/parallel. Each cell has a nominal voltage of 3.7V.

**Capacity:** 50 Watt-hours, nominal 3.5 Ampere-hours.

**Output Current:** Rated maximum continuous output current 8 Amperes. For 2 or more linked batteries 12 Amperes.

**Charge Voltage:** 16.8V.

**Protection System:** The multi-level electronic protection system is fail-safe and guards against conditions that reduce battery life. The circuit is coated for protection and to ensure operation of the safety systems in the event of damage to the battery.

**Temperature Range:**

**Charging:**  
0°C to +40°C  
(Optimum +10°C to +30°C).  
+32°F to +104°F  
(Optimum +50°F to +86°F).

**Discharging:**  
-20°C to +50°C  
(Optimum +5°C to +40°C).  
-4°F to +122°F  
(Optimum +41°F to +104°F).

**Storage:**  
+10°C to +30°C (+50°F to +86°F).

**Dimensions:**

**Length:** 109mm 4.3"  
**Width:** 87mm 3.4"  
**Height:** 43mm 1.7"

**Weight:** 360g 12.7oz



© PAG Ltd. PAG is the trademark of PAG Ltd. / PAG reserves the right to change the specifications contained herein without notice.



**PAG Ltd. UK**  
Epsom Downs Metro Centre  
Units 9 & 10, Waterfield,  
Tadworth, Surrey KT20 5LR

**E sales@paguk.com**  
**T +44 (0)20 8543 3131**  
**www.paguk.com**